

BC Hants & IoW Branch: New Members' Day – 5 Aug 2023

The Hampshire Reserves



RECOVER. TRANSFORM. INSPIRE.

SAVING BUTTERFLIES AND MOTHS

OUR 2021-2026

STRATEGY



Yew Hill

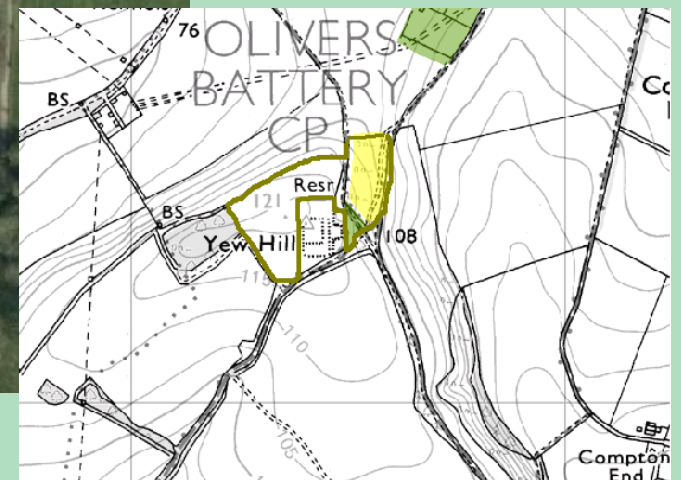
‘Although pocket handkerchief sized, this open downland reserve is the epitome of pristine chalk grassland.

Its variety of grasses, herbs and wildflowers and mixture of close cropped turf, anthills, longer grass and shelter belts of scrub and hedgerow all provide habitat for 30 species of butterfly.’

Kevin Freeborn, Butterfly Walks

White Hairstreak
Photo credit Martin Warren









Bentley Station Meadow

Purchased by BC in 1992, this 9 acre site has an old wet meadow and woodland edge habitats. It sits in the northern corner of Alice Holt Forest.

More than 400 species of moth have been recorded and 30 species of butterfly. It's a good place to spot Purple Emperor, Silver-washed Fritillary and Purple Hairstreak. It's botanically rich supporting plants such as sneezewort and betony.



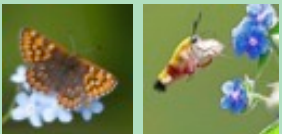
Magdalen Hill Down

The original steep-sided chalk grassland reserve is a surviving remnant of traditional sheep grazed downland. It was nearly lost to scrub, but from 1989 through hard work, dedication and vision the hillside was restored back to downland. Following the acquisition of adjacent farmland in 1997 and 2004, this additional land went through another phase of transformation to restore the species rich grassland. The site now supports over 100 acres of species rich grassland and is a real 'conservation triumph'.



Magdalen Hill Down – 1 (original reserve)

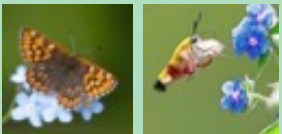
1989



Magdalen Hill Down – an introduction



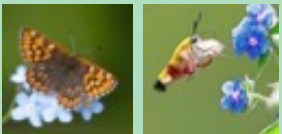
Winter 1990



Magdalen Hill Down – an introduction

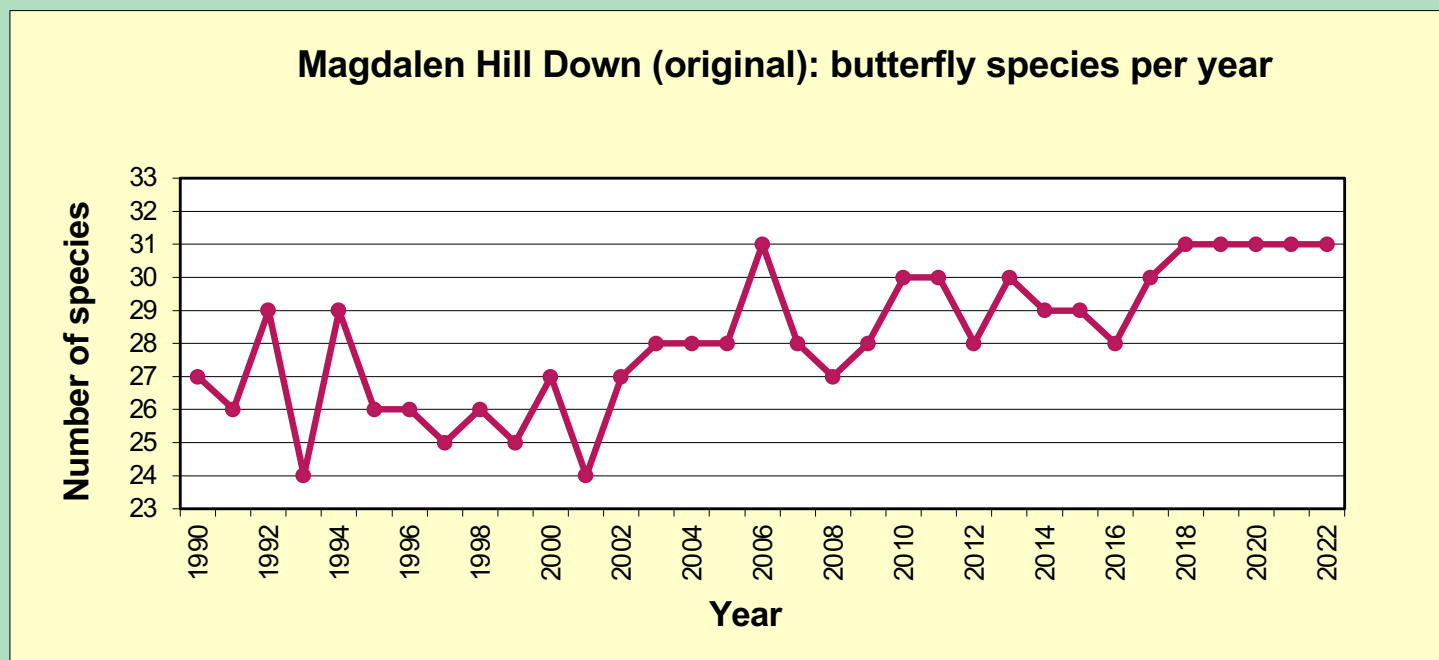


May 2016



Magdalen Hill Down – an introduction

- Now one of the best chalk downland sites in Hampshire
- 2021 – 31 butterfly species on transect
- 2021 – 7000 individual butterflies on MHD (original) transect
- 39 butterfly species recorded since 1990
- Rich chalk flora and excellent diversity of moths, bees and other wildlife.



Magdalen Hill Down – an introduction



Chalkhill Blue



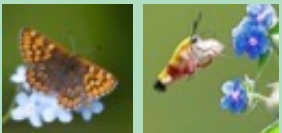
Adonis Blue



Brown Argus



Dingy Skipper

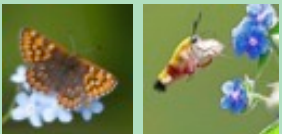


Magdalen Hill Down

Managing livestock – vital for the success of a grassland nature reserve



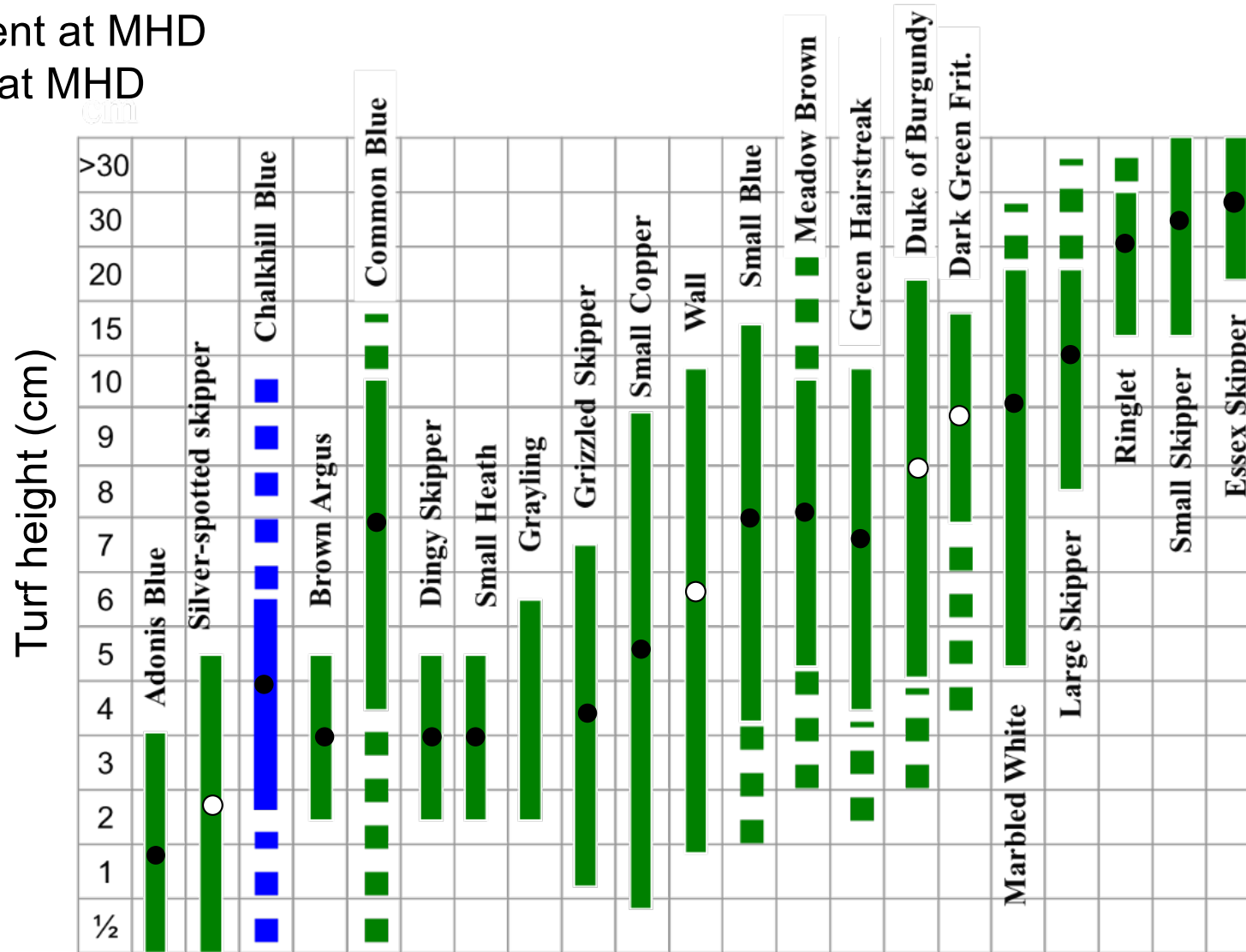
May 2017



Turf height (cm) preferences for chalk grassland butterflies.

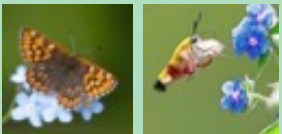
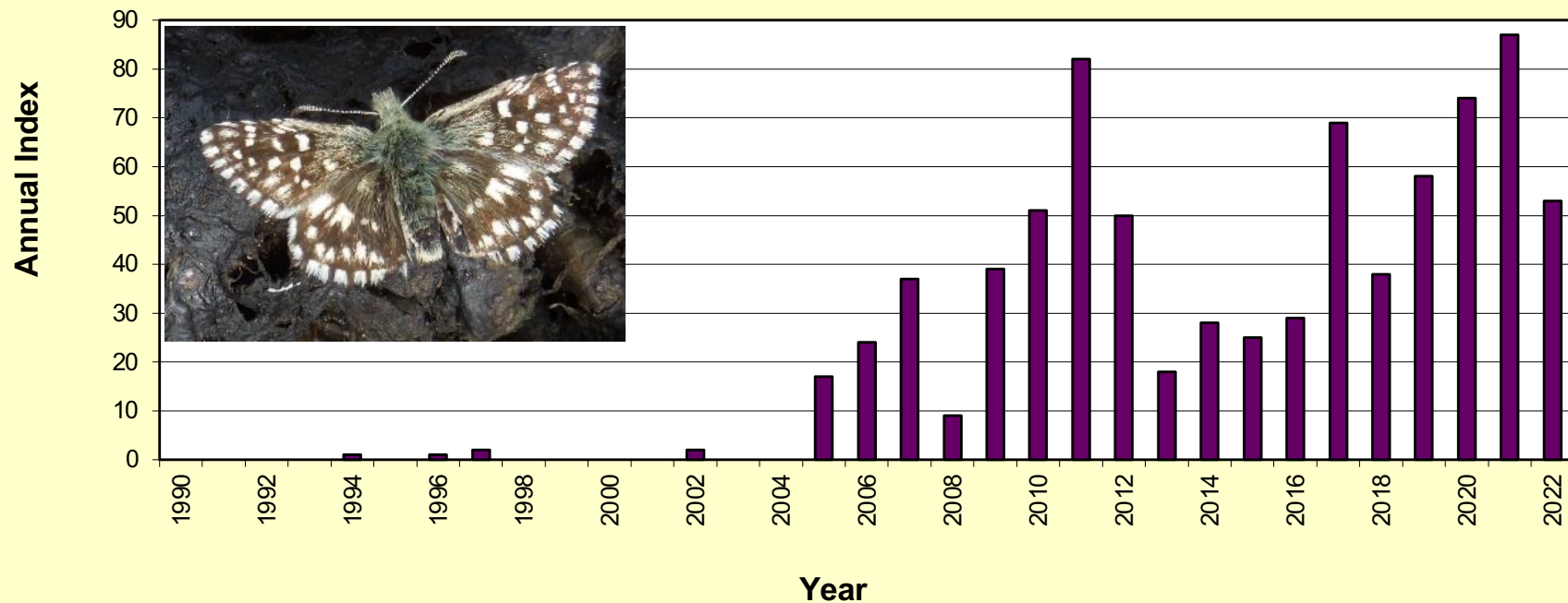
(modified after BUTT, 1986).

- resident at MHD
- seen at MHD



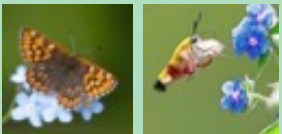
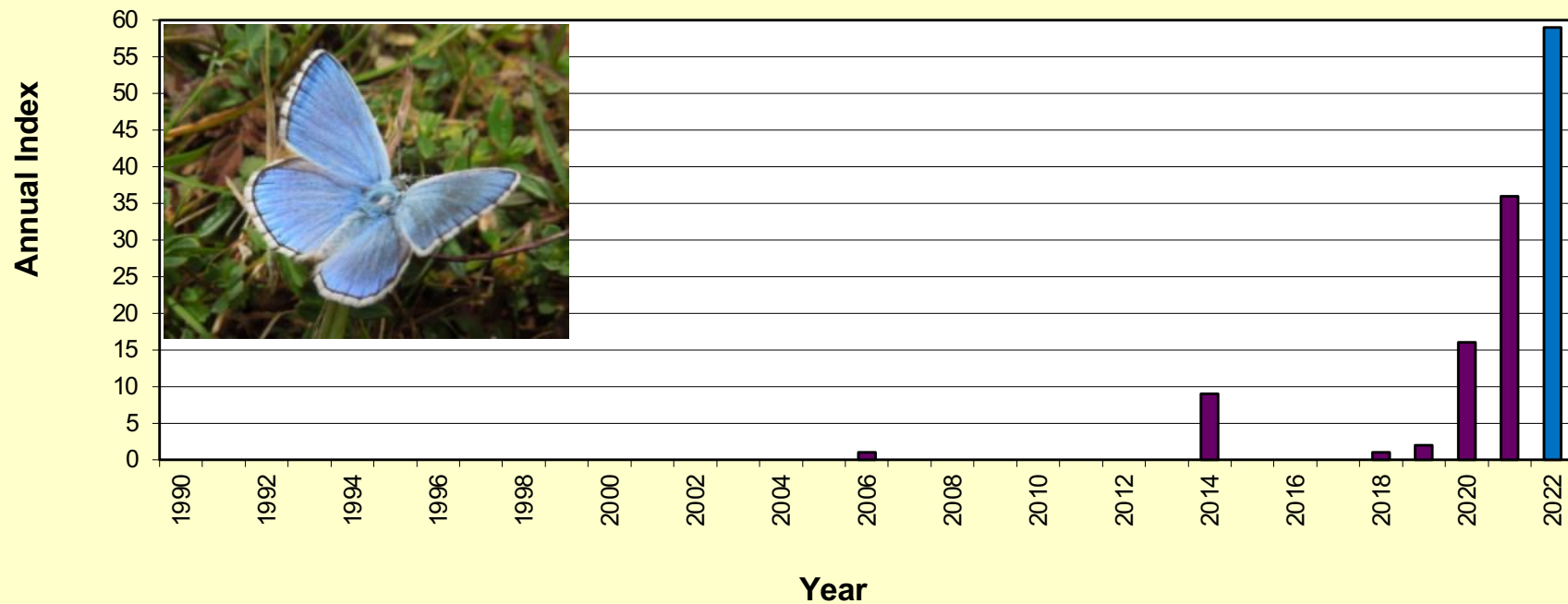
Magdalen Hill Down – rise of the Grizzled Skipper

Grizzled Skipper (*Pyrgus malvae*)



Magdalen Hill Down – rise of the Adonis Blue

Adonis Blue (*Polyommatus bellargus*)



Graze it or lose it!

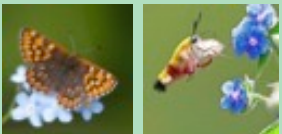
We use traditional breed cows and sheep loaned from HIWWT
They graze different parts of the reserve on a rotation through the year

Mix it up!

Short turf for smaller flowering species with ungrazed summer meadows, hay cut areas and shelter belts from hedges and scrubby thickets



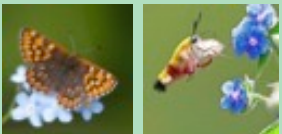
Magdalen Hill Down – an enlarging nature reserve



Habitat re-creation (arable reversion): MHD – 2 “Extension”

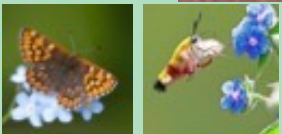


Magdalen Hill Down – an enlarging nature reserve



Habitat re-creation (arable reversion): MHD – 3 “North”

Jan 2005



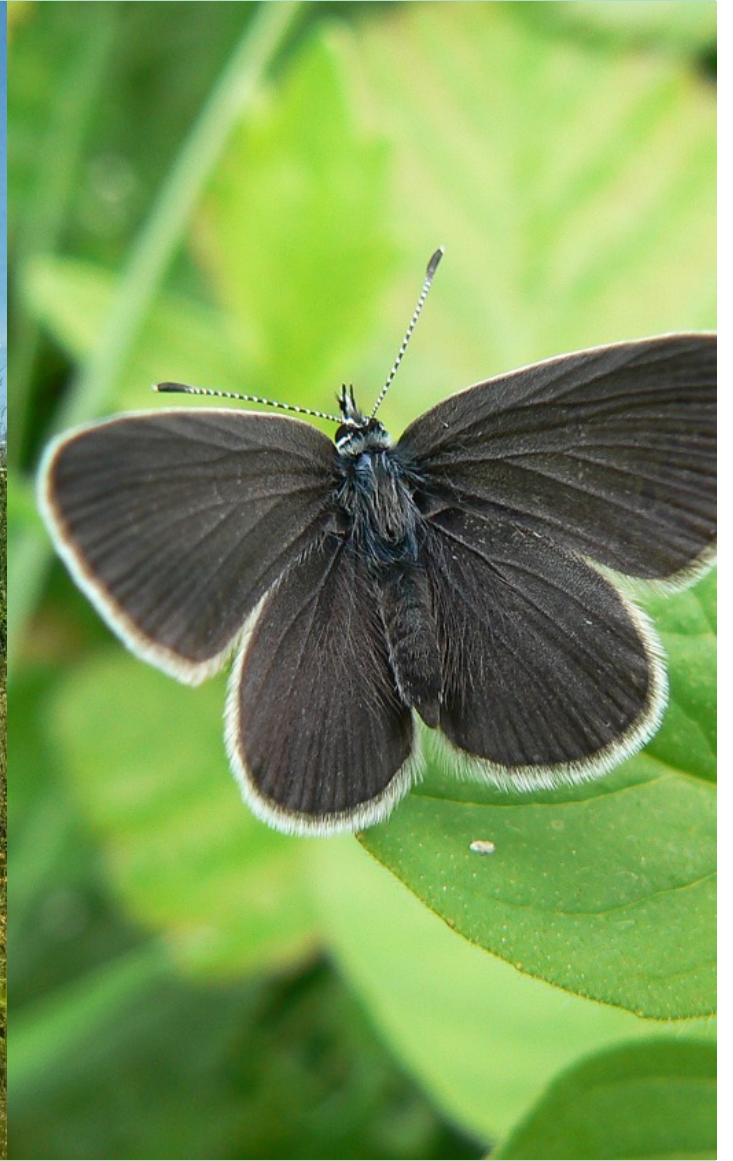
Habitat re-creation (arable reversion): MHD – 3 “North”



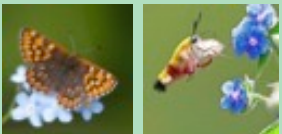
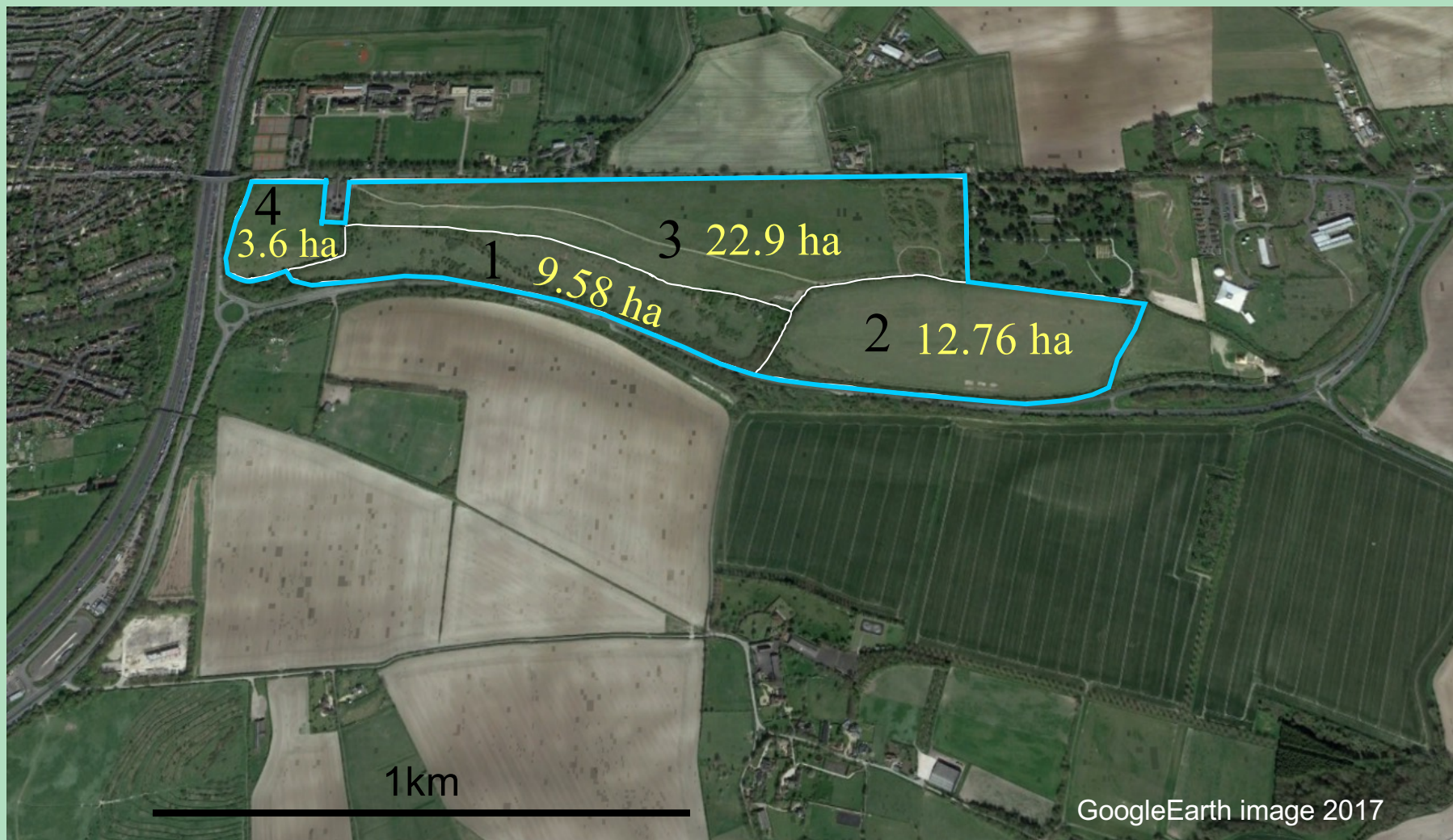
June 2008



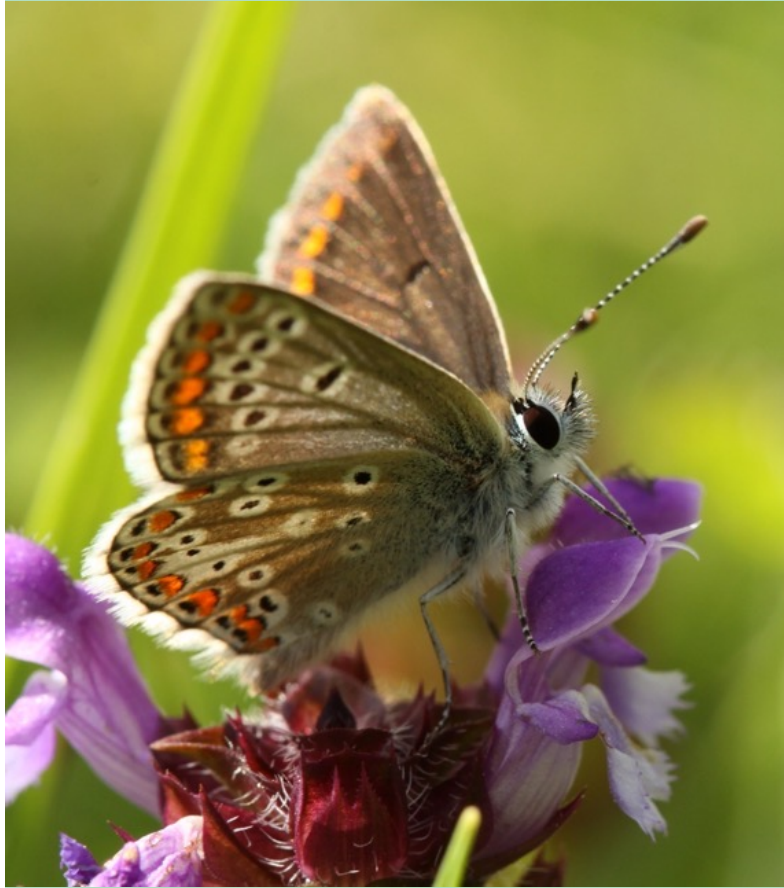




Magdalen Hill Down – 4 “Old Allotments”











*Thank you
for listening.*

